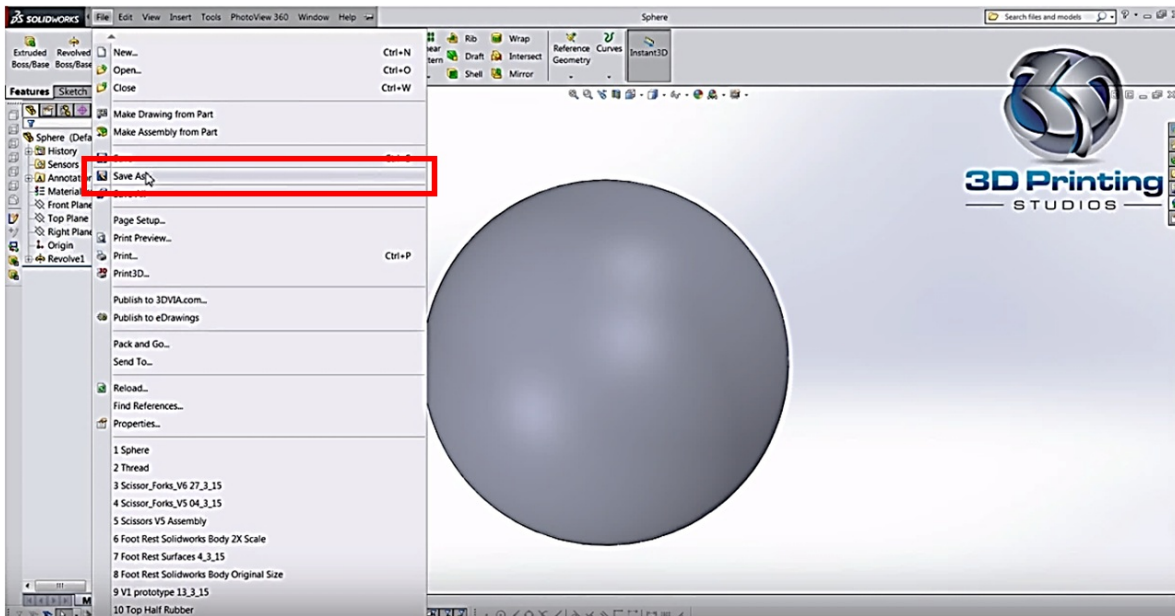


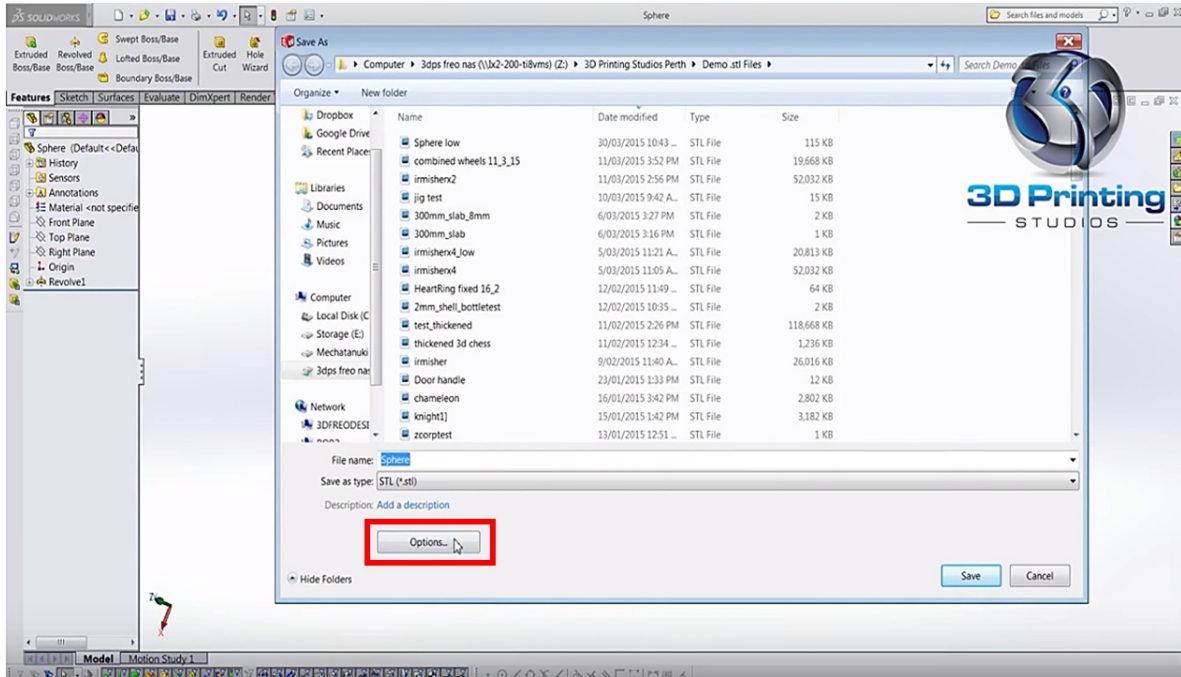
How to import Solidworks files into Cortex

Solidworks

1. Go to **File > Save As** in the dialog box

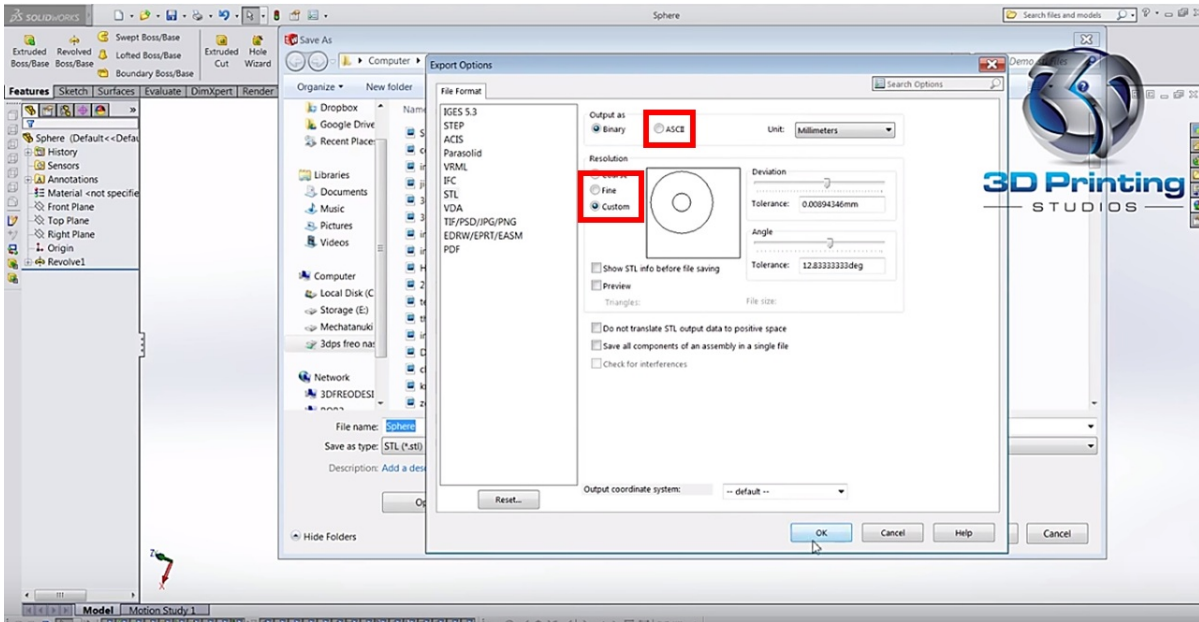


2. Click on **Options** button underneath (where you enter your filename)



3. You will see a window where you can choose between different file type. Choose. **ASCII** and **Fine** for a better resolution, or **Custom** for the resolution that you want.

4. Press the **Ok** button and **Save**. Your file will be in **ACSII**



5. Compress your new file ACSII (This is your CAD)

Cortex

1. Click on the button **Import Cad...**



2. Find your cad

3. A list of the beam contain in the cad will appear inside the box labeled **Assembly**

*****Be aware that importing a cad clean the Assemblies box, so be sure to be done with the assembly that are there before bringing any new cad.*****